

Wifi 2FXS ATA SC-2200Wa & Wifi 1FXS+PSTN ATA SC-2100Wa (1FXS+1FXO) (Combination of Wifi router & VoIP for Home/SOHO)



Three Wireless Operating Modes:

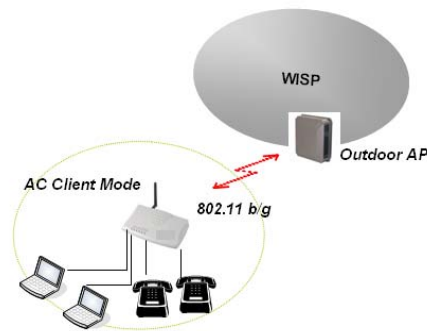
- AP Mode
- AC Client Mode
- AC Client + AP Mode

Wifi 2FXS ATA SC-2200Wa / Wifi 1FXS+PSTN ATA SC-2100Wa consist of Wireless Router & VoIP gateway for small and medium-size offices use. With a built-in IEEE 802.11b/g wireless AP/AC client, the SC-2000WA /SC-2100WA offers maximum mobility via 54Mbps data transmissions.

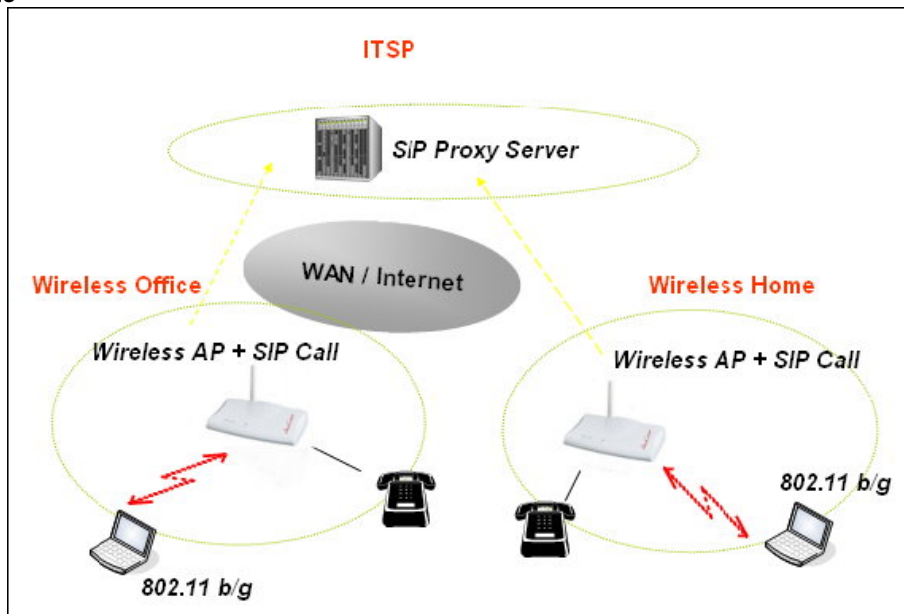
It supports standard SIP (RFC3261) for IP telephony service deployment to fulfill connection to emerging SIP-based networks. Based on the ITSP VoIP service, two/one SIP accounts can be configured.

Application Scenario:

1. AC Client Mode



2. AP Mode



Wireless LAN:

Complies with 802.11g & 802.11b (2.4GHz)

Data rates up to 54Mbps

Support WEP, WPA data encryption

Both Support Wireless Access Point Mode & Wireless Client Mode

Modulation Technique

802.11b : DSSS (Direct Sequence Spread Spectrum) with BPSK (1Mbps),

QPSK (2Mbps), and CCK (5.5 and 11Mbps)

802.11g : OFDM

Transfer data rate: 802.11g : 54, 48,36,24, 18,12,9,6Mbps, auto-fallback

802.11b: 11, 5.5, 2,1Mbps, auto-fallback

Output Power : 15~18dBm(CCK), 10~13dBm(OFDM)

RF sensitivity : @PER<0.08 , 11Mbps < -84dBm (typical)

@ PER<0.08, 54Mbps < -70dBm (typical)

Telephony Specification:

Voice Codec: iLBC (internet Low Bitrate Codec), G.711(A-law / μ -law), G.729 AB,

G.723 (6.3 Kbps / 5.3Kbps), G.276 (16, 24, 32, 40 Kbps)

FAX support : T.38 FAX Relay, G.711 Fax pass-through

Call Waiting

Call Hold/Resume

Call Transfer: Blind Transfer / Attended Transfer

Call Forward: On Busy Forward / No Condition forward / No Answer Forward

Call Screen: Incoming Call Screen (Reject or Forward Incoming Call) / Outgoing Call

Screen (Blocking Outgoing Call)

Multi-Line Appearance

MWI

DTMF Relay : In-band DTMF Relay / Out-of-band DTMF Relay (RFC2833)

3-Way Conference; Peer-to-Peer SIP Call by Dial Plan

IP Specifications:

SIP (RFC 3261) , SDP (RFC 2327), Symmetric RTP, STUN (RFC3489),

ENUM (RFC 2916), RTP Payload for DTMF Digits (RFC2833), Outbound Proxy Support

LAN :NAT, DHCP Server

WAN: PPPoE client, DHCP client, Fix IP Address

Network Address Translation: Providing build-in NAT router function.

Static Routing

Virtual Server

QoS : IP TOS (IP Precedence) / DiffServ

Peer to Peer Call by Dial Plan

Call Features:

Adjustable volume: - 9 db ~ 9 db
 VAD (Voice Activity Detection)
 Dynamic Jitter Buffer
 CNG (Comfort Noise Generation)
 Lost Packet Concealment
 Caller ID Generation: DTMF CID / Bellcore CID / ETSI CID /

NTT CID Generation

Firewall Security:

Stateful Packet Inspection
 DoS attack defection
 Access Control Service
 Content Filtering
 IP & Generic Packet Filtering
 Real-time Attack Alert and Logs
 DMZ Interface for Public Server

Configuration & Management:

Web-based Graphical User Interface
 Remote management over the IP Network
 Web-based firmware upgrade
 Backup and Restore Configuration file
 Auto Provision
 SNMP v1/v2

General Specification:

AC power : AC100V-240V, DC12V/1.5A,50/60 Hz
 Antenna : Reverse connector (RP-SMA) with a detachable
 Dimension : 170 x 100 x 35 mm
 Weight: 200g

Wifi 2FXS ATA SC-2000Wa / Wifi 1FXS+PSTN ATA SC-2100 Wa Specification:

	SC-2200Wa (2FXS)	SC-2100Wa (1FXS+1FXO)
Ethernet Port	1 WAN + 1LAN	1 WAN + 1LAN
Telephony Interface	2x RJ-11	2x RJ-11
Wireless Module	802.11 b/g	802.11 b/g
	One Internal Inverted-F PCB antenna &	
Antenna x 2	one External Dipole antenna	
FXS	2	1
PSTN Line	Nil	1
SIP(RFC3261)	9	9
QoS	9	9
NAT Traversal	9	9
Echo Cancellation	9	9
G.711 a/μ law G.723, G729,		
G.726,iLBC	9	9
T.38 / G.711 Fax Pass Through	9	9
NAT Router	9	9